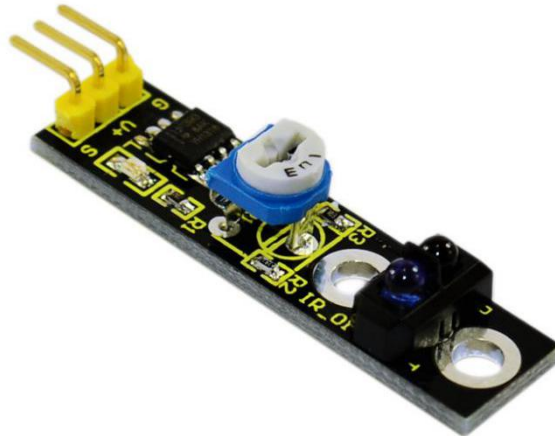

Line Tracking Sensor



Introduction

This Line Tracking Sensor can detect white lines in black and black lines in white. The single line-tracking signal provides a stable output signal TTL for a more accurate and more stable line. Multi-channel option can be easily achieved by installing required line-tracking robot sensors.

Specification

Power supply: +5V

Operating current: <10mA

Operating temperature range: 0°C ~ + 50°C

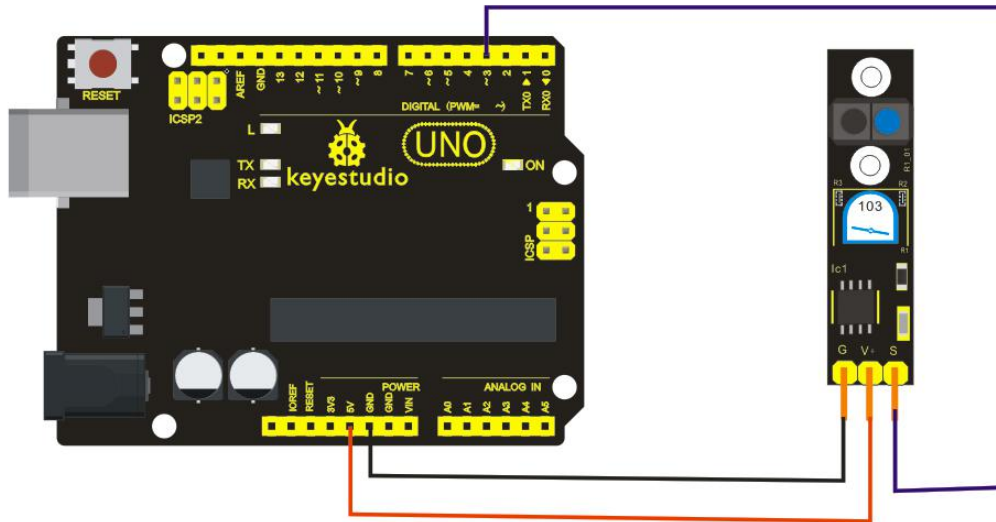
Output interface: 3-wire interface (1 - signal, 2 - power, 3 - power supply negative)

Output Level: TTL level

Size: 41.7*10.7mm

Weight: 3g

Connection Diagram



Sample Code

///
//Arduino Sample Code

```
void setup()
```

```
{
```

```
  Serial.begin(9600);
```

```
}
```

```
void loop()
```

```
{
```

```
  Serial.println(digitalRead(3)); // print the data from the sensor
```

```
  delay(500);
```

```
}
```