

## Receiver RV908M

### Specification

2015 Oct

#### 1. Function

- 1) 12 hub75 interface on board(supports 32 scan mode), no extra hub card needed;
- 2) Supports 12-bit HDMI colors input (required the 9th generation sending card);
- 3) Using 18-bit signal processor, maximum support 18-bit (260,000) gray (each of red, green and blue);
- 4) Single card maximum support 1024×768 pixels;
- 5) Single card can output 24 groups RGB data;
- 6) Supports 138 decode, 595 serial decode and so on.
- 7) Supports pixel-by-pixel brightness and color calibration; single-card color space conversion;
- 8) High refresh rate and high grey level with most of the driver ICs;
- 9) Supports general driver ICs and most of the PWM driver ICs
- 10) Support hot backup with dual receiver cards for demanding performances screen;

- 11) Support network cable BER test;
- 12) In line with RoHS standards;
- 13) In line with EU standards CE-EMC class B;

Compare with RV908T/RV908H, RV908M is with E signal which can supports up to 32 scan mode; one more set network port can be added which can realize two sets network cable and network port hot backup function. The model in stock is with 2 network ports, and you need to make order if you need 4 ports.

## 2.RV908M PINOUT

The receiving card has 2 operating modes, only supporting Full-color and two-color screen. Normal mode has 8 available interfaces; 12-group-data-mode has 12 available interfaces.

Each interface output data is as following:

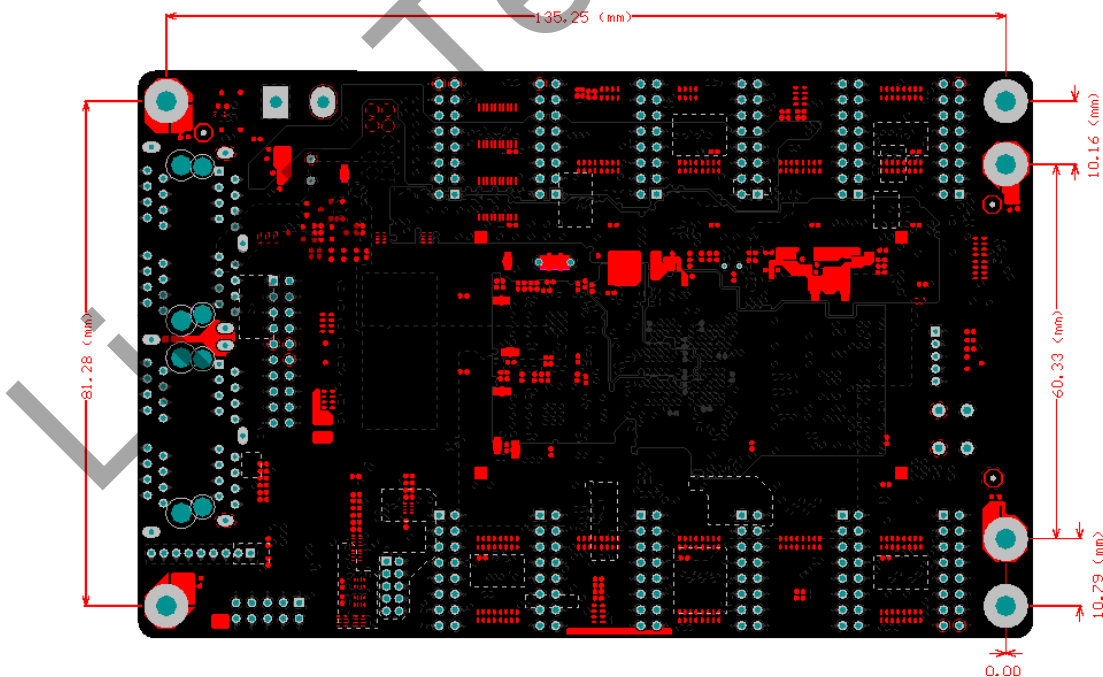
|     |    |    |     |
|-----|----|----|-----|
| R1  | 1  | 2  | G1  |
| U1  | 3  | 4  | GND |
| R2  | 5  | 6  | G2  |
| U2  | 7  | 8  | GND |
| A   | 9  | 10 | B   |
| C   | 11 | 12 | D   |
| CLK | 13 | 14 | LAT |
| OE  | 15 | 16 | GND |

### 3. Model table

RV908H is in stock. RV918H need make to order.

| Model  | RJ45 Direction | output interface type   | interface in front side |
|--------|----------------|-------------------------|-------------------------|
| RV908H | 90 Degree      | interface in front side |                         |
| RV918H | 180 Degree     | interface in front side |                         |

### 4. Dimension and position of the installation holes



### 5. Working conditions

|                             |              |               |      |               |      |
|-----------------------------|--------------|---------------|------|---------------|------|
| Rated voltage (V)           | 5            | maximum value | 5.5  | Minimum value | 4.5  |
| Rated current (A)           | 0.80         | maximum value | 0.87 | Minimum value | 0.73 |
| Rated power consumption (W) | 4.0          | maximum value | 4.8  | Minimum value | 3.3  |
| Working temperature (°C)    | -20°C ~ 70°C |               |      |               |      |
| Working humidity (%)        | 0% ~ 95%     |               |      |               |      |